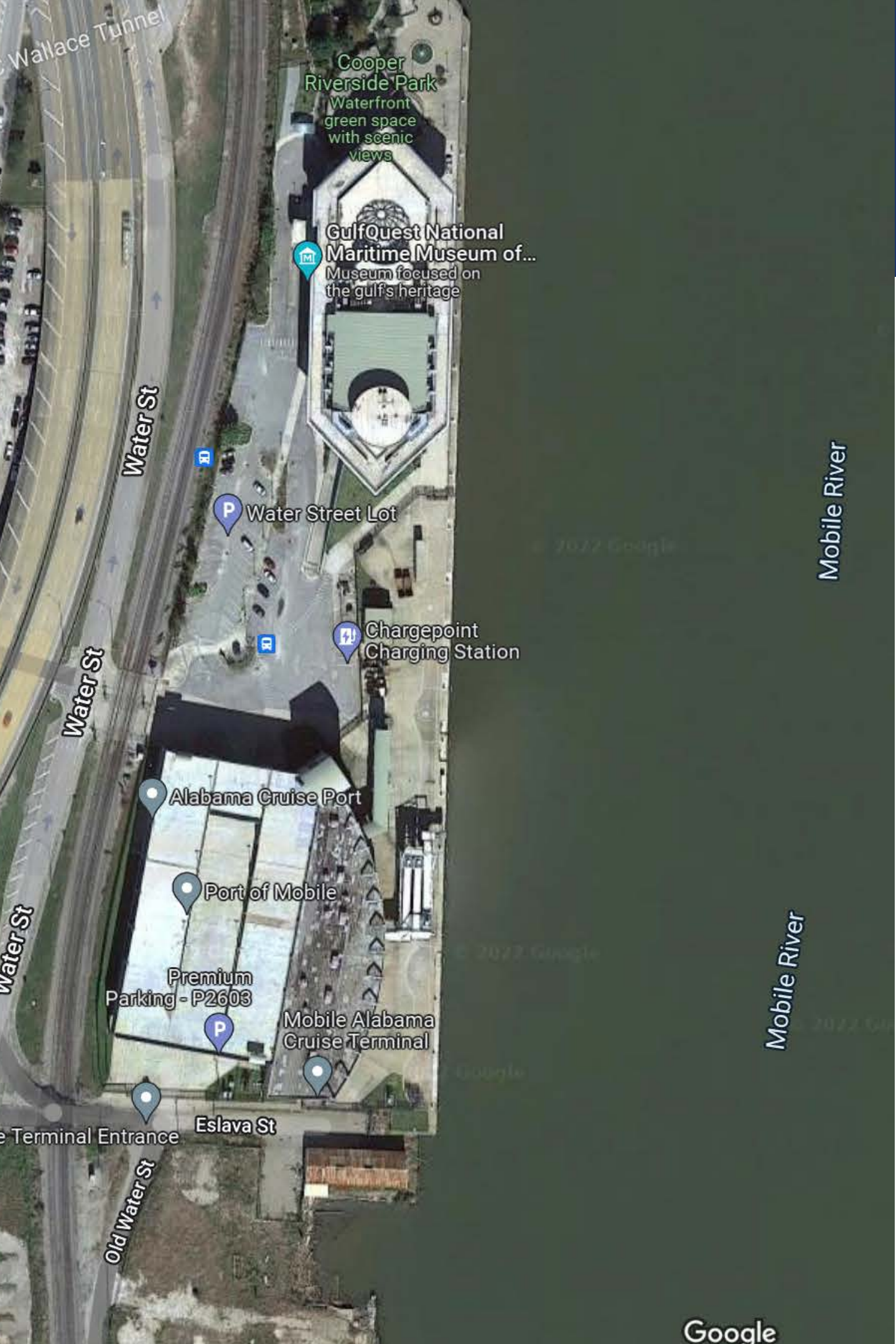




# THE ALABAMA CRUISE TERMINAL AND THE CITY OF MOBILE

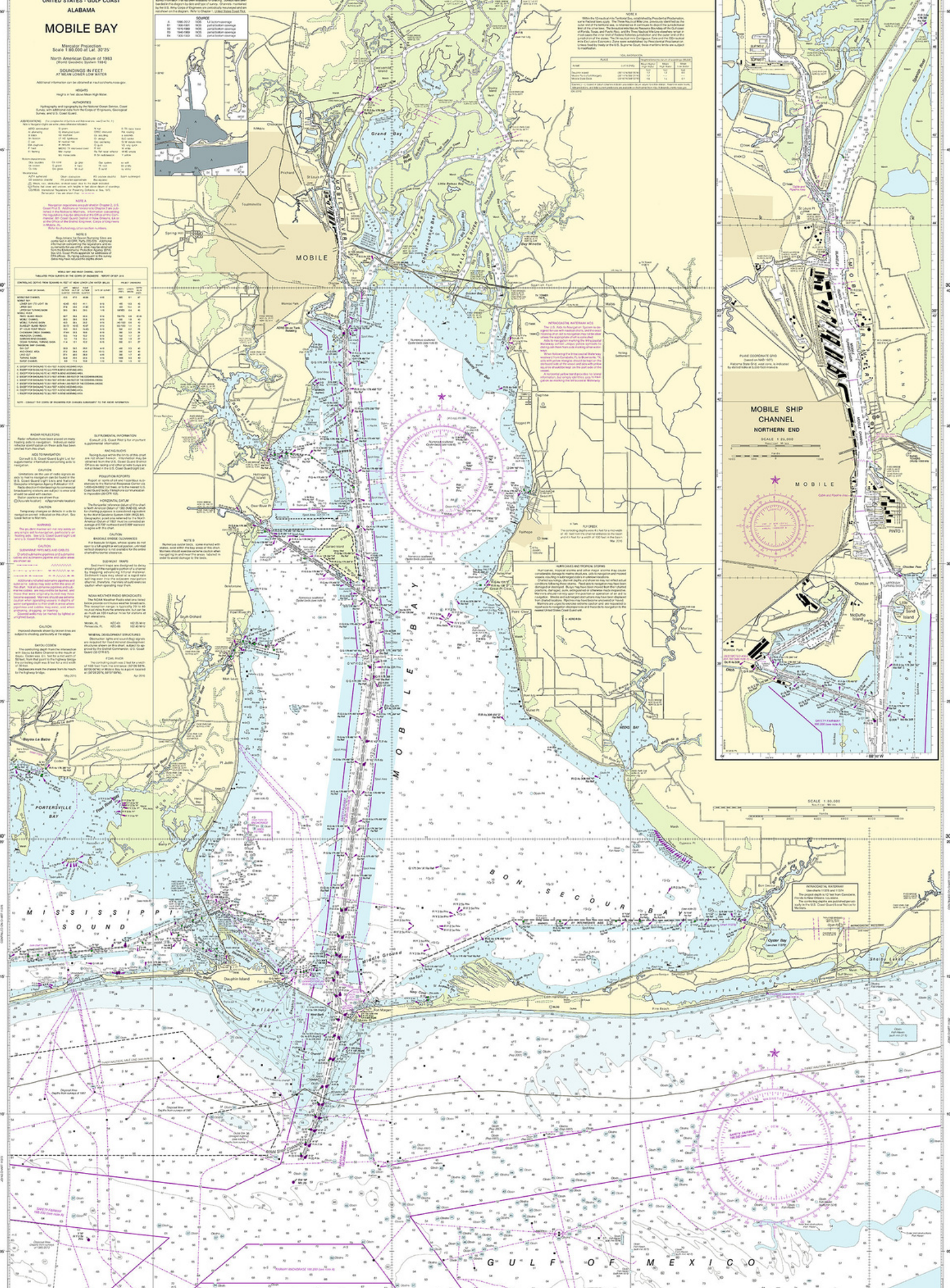




CITY OF MOBILE ALABAMA CRUISE TERMINAL  
201 SOUTH WATER STREET  
MOBILE, AL 36602  
PHONE: (251) 208-1061



- 100 ton mooring bollards, 60 ft spacing
- Trellex fenders, 60 ft spacing
- 1,200 ft dock
- Large turning basin south of terminal accommodates ships >1100'
- Pilots backing into and out of berth from turning basin
- Water depth 30 ft MLLW pierside
- Dock elevation +8.0 ft
- Dock height above MHW +7.0 ft
- Dock height above MLLW +8.5 ft
- Fresh water available



# PORT DETAILS

- Cruise Terminal just a 3.5-hour transit from the sea buoy
- Passenger ships receive first priority for transits
- 45' Channel Project Depth



## **USS ALABAMA**

Visitors to Battleship Memorial Park will be able to board the Battleship USS ALABAMA and explore 12 decks. Go aboard and down inside the oldest Submarine on public display, USS DRUM. View over 25 rare and historic aircraft.

Plus much more!!



## **EXPLOREUM SCIENCE CENTER**

With a variety of traveling exhibits, permanent exhibits, thought-provoking larger-than-life digital dome films, and fun, hands-on educational programming, the Exploreum aspires to increase science literacy among the people of south

Alabama.



## **BELLINGRATH GARDENS & HOME**

Enjoy 65 acres of year-round floral pageantry in a Southern estate garden. Bellingrath Gardens and Home features blooms and beauty every day of the year.

# MUSEUMS

---

- GulfQuest Maritime Museum of the Gulf of Mexico (next to Terminal)
- History Museum of Mobile
- Mobile Museum of Art
- Mobile Medical Museum
- National African American Archives and Museum
- Mobile Carnival Museum



# MARDI GRAS

- The Mobile Alabama Cruise Terminal is typically available for Port of Calls on Sunday, Monday, and Mardi Gras Tuesday
- Passengers can experience day or evening Mardi Gras parades and the Mobile Mardi Gras experience is within easy walking distance of the terminal





# GET IN TOUCH

---

## **Alabama Cruise Terminal**

Joseph Snowden

[joseph.snowden@cityofmobile.org](mailto:joseph.snowden@cityofmobile.org)

(251)208-1067

## **Visit Mobile**

Patty Kieffer

[pkieffer@mobile.org](mailto:pkieffer@mobile.org)

(251)208-2012